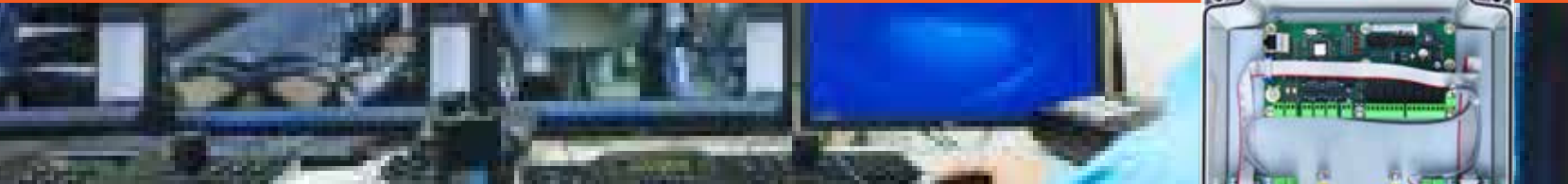


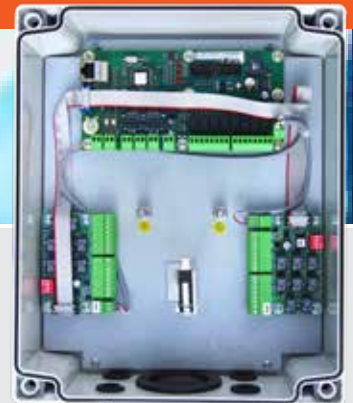
Perimeter Detection Systems

MAXIBUS UNIVERSAL

Centralization of alarm information



The MAXIBUS UNIVERSAL allows you to centralize the alarm contacts of different PROTECH systems into 1 single point, through networking. Programming and maintenance can be done remotely.



Product Strengths

- Can manage up to **800 alarms**
- Integration with the leading **VMS systems** (Genetec, ONSSI, Milestone, etc.)
- **Remote Maintenance** : time-stamped records, real-time visualization of detectors, configuration settings accessible via web server
- **136 alarm relays** (8 relays + up to 8 relays x 16 extension cards)

System architecture

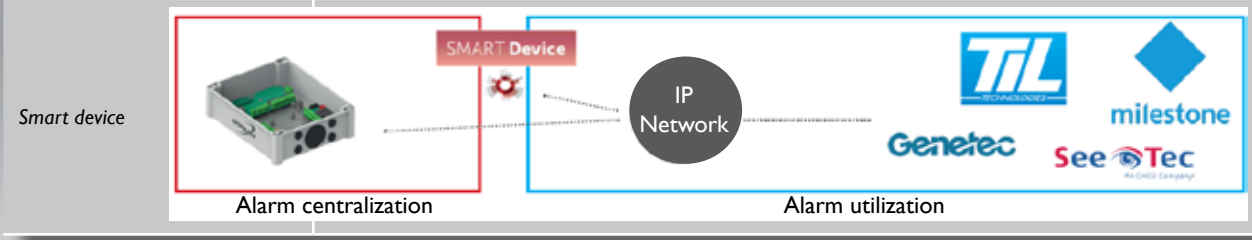


TECHNICAL CHARACTERISTICS

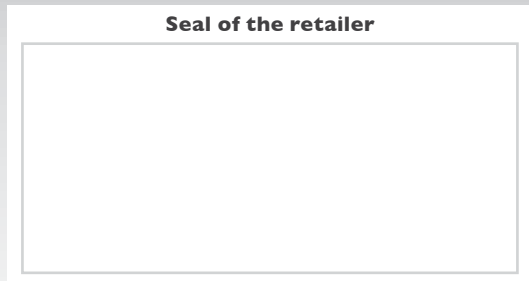
Power supply	12 Vdc
Consumption without alarm	230mA without relay extension card (1,5 A with 136 relays max.)
Connection	Ethernet RJ45, 10/100 Base-T
Field BUS	4 RS485 outputs under the MODBUS protocol
Alarm outputs	From 8 to 136 output relays with the addition of a 8-relay extension card
Housing dimensions (mm)	253 x 313 x 115
Operating temperature	From 0°F to +158°F (From 0° C to +70° C)

OPTIONS

Extension card	8 relays, up to 16 cards
CONNECT Module	Connects the intrusion detectors to the MAXIBUS UNIVERSEL concentrator via a secured dynamic mesh radio network (D.R.N)



529 Vista Blvd. A-3 • Sparks, NEVADA 89434 • USA
I (800) 428-9662
 e-mail: sales@protechusa.com



In order to continuously ensure the high standard of quality and performance of our products, we reserve the right to modify the present technical data without notification.

www.protechusa.com

NIC211-ENV2.0 11.18