

## INTEGRATION



# CONNECT

## 8 INPUT REMOTE MODULE

WIRED OR RADIO CONNECTION SYSTEM FOR  
INTRUSION DETECTORS



### PERFORMANCE FEATURES

- **Configuration via PC or smartphone**
- **Communication Modes**  
wired bus cable or secure radio network depending on the site
- **Low Power Option**  
(solar-powered version available)
- **Adaptability to all types of configurations**



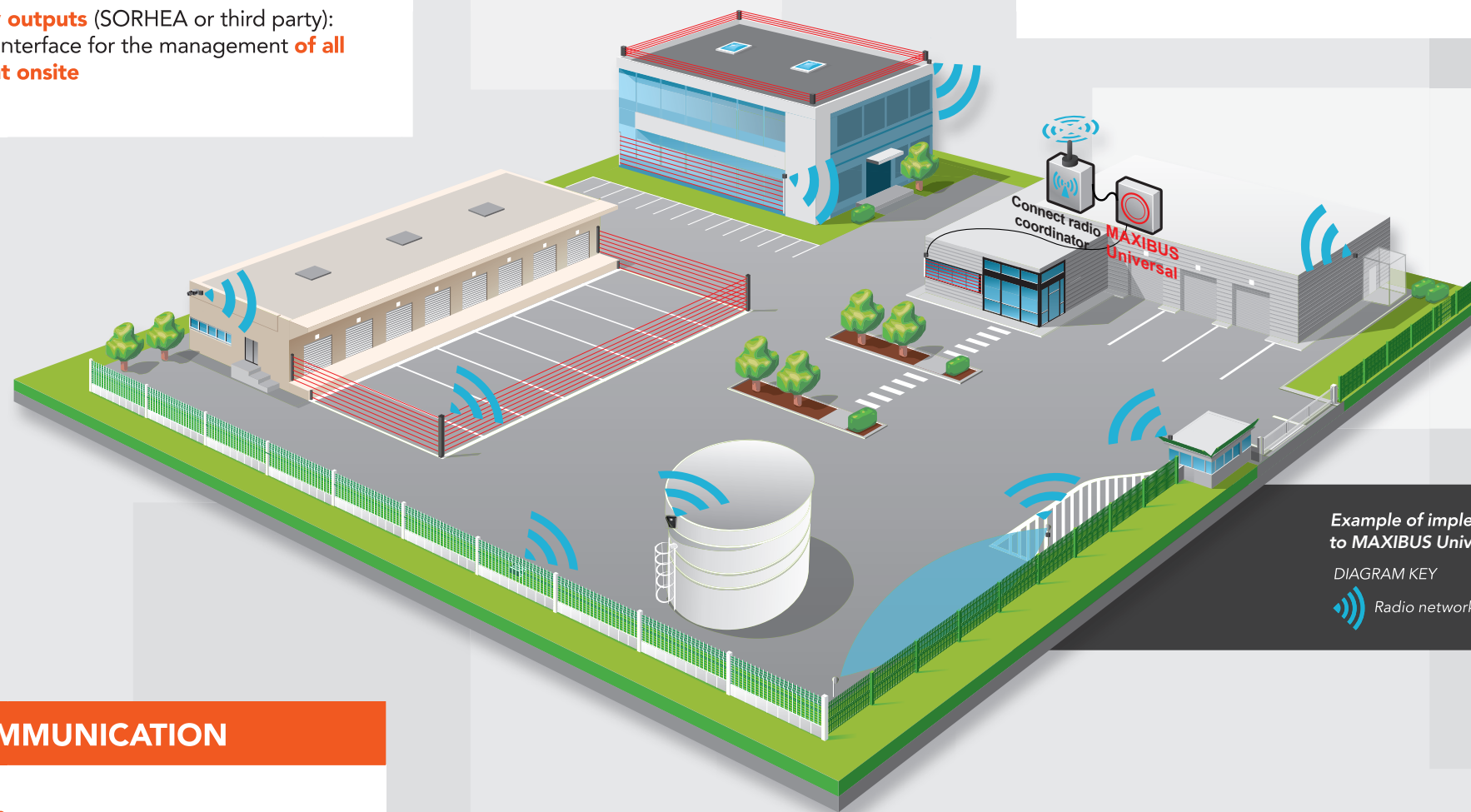
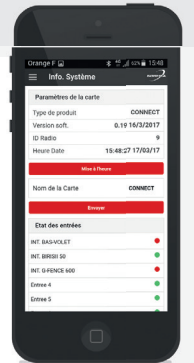
## CENTRALISATION OF ALARM INFORMATION

The Connect module can communicate the alarm information from all detectors on a site to the MAXIBUS Universal hub.

- **Easy** to implement
- **Multiple** connection possibilities:
  - Dynamic mesh radio network
  - RS485 bus cable
- Compatible with **all types of dry relay outputs** (SORHEA or third party): MAXIBUS Universal becomes the sole interface for the management **of all perimeter intrusion detectors present onsite**

## QUICK AND EASY IMPLEMENTATION

- **Personalized** alarm input **names**
- **Simplified configuration and maintenance:** smartphone application available
  - configuration of alarm inputs
  - local history reading per input: 200 event log for every detector



Example of implementation of products linked to MAXIBUS Universal via the MI8 CONNECT

DIAGRAM KEY  
 Radio network

## SECURE MESH RADIO COMMUNICATION

- **Private LoRa® radio communication**
- **Encrypted radio network:** data security
- **Mesh radio network** for a guaranteed robust installation
- **Site integrity and security:** permanent monitoring of the presence of MI8 modules on the network (watch dog function)
- **Radio range:** 300 m line of sight

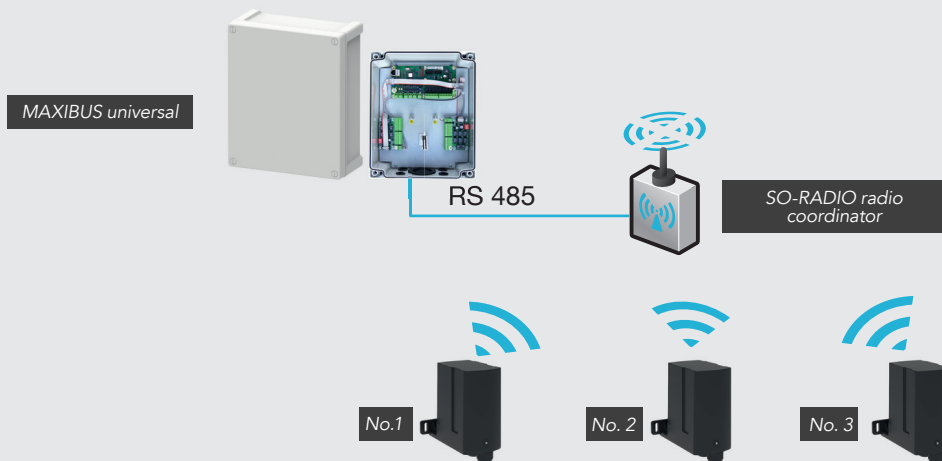
- **Solar powered version available**
- **Isolated contact recovery** (gate contacts, etc.)

# CONNECT MODULE



WIRED OR RADIO CONNECTION  
SYSTEM FOR INTRUSION DETECTORS

## INTEGRATION

## CONNECT MODULE OPERATION SUMMARY



## TECHNICAL CHARACTERISTICS

8-INPUT REMOTE MODULE	
Alarm information	8-input on/off + Tamper
Alarm transmission	Either by dynamic mesh radio network to radio coordinator Or by wired network RS 485
Radio frequency	Frequency band 915MHz, 19 selectable channels, LoRa modulation
Data encryption	AES 128 bits
Power	Range 4 V DC – 26 V DC (consumption 10 mw at 4 V DC)
Operating temperature	-40 °C to +70 °C
Electromagnetic compatibility	FCC & Compliant with European standards (CE label)
Local wireless configuration via smartphone applications	Applications available for all smartphones:  

SO-RADIO COORDINATOR	
Alarm transmission	RS485 to MAXIBUS Universal
Power	12 V DC (40 mA)
Operating temperature	-40 °C to +70 °C
Electromagnetic compatibility	FCC & Compliant with European standards (CE label)

NC233-EN V1.2 09/25 - F I D J I • Photos : © Sorheia, Getty Images, DR.



Protection Technologies, Inc. - 529 Vista Blvd - Sparks, NV 89434 - USA [www.protechusa.com](http://www.protechusa.com)

 Toll Free: 1-800-428-9662  (775) 856-7333 |  (775) 856 7658 |  [sales@protechusa.com](mailto:sales@protechusa.com)