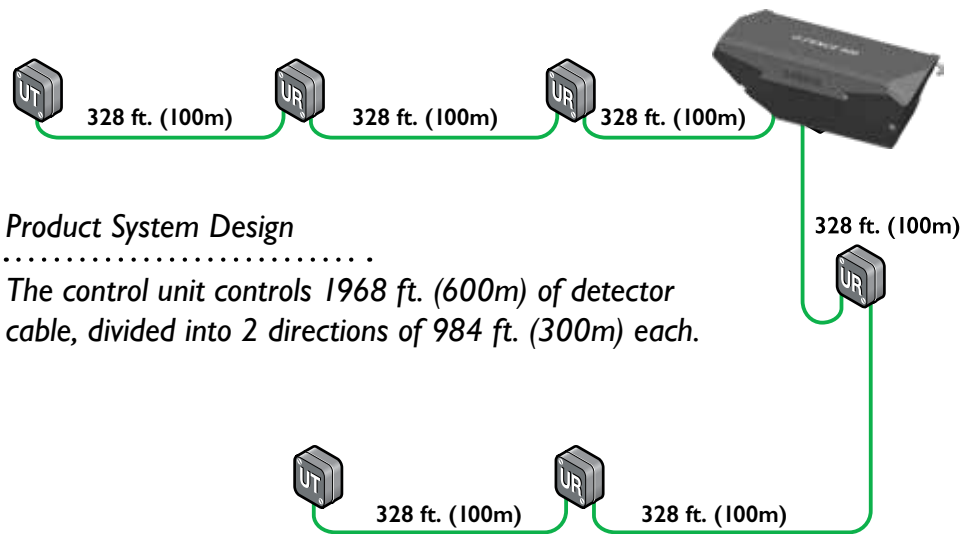


### Technical Specifications

	G-FENCE 600	G-FENCE 600 Z
<b>Power consumption</b> - Without ethernet enabled - With ethernet enabled	30 mA 72 mA	138 mA 188mA
<b>Configuration</b>	Auto-calibration - Sensitivity adjustment per sensor/zone at distance or locally without software	
<b>Alarm outputs</b> G-FENCE 600 G-FENCE 600 Z	2 intrusion alarms (1 per zone) + 1 technical alarm 10+1 relays	
<b>Operating temperature</b>	From -40°F to +158°F (-40°C to 70°C)	
<b>Remote maintenance</b>	Integrated web server - Up to 1000 events log history	
<b>Installation</b>	1 sensor per fence panel - up to 656 ft. (200m) of additional passive cable per system	



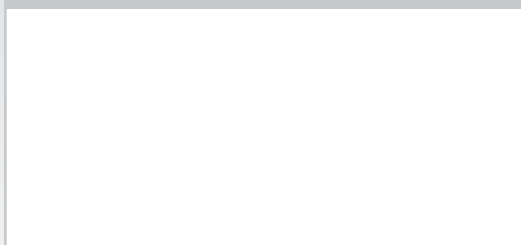
#### Product System Design

The control unit controls 1968 ft. (600m) of detector cable, divided into 2 directions of 984 ft. (300m) each.

### System Components

Ref. 40670201	Control Unit G-FENCE 600 - 3 alarm outputs - Inside / Outside installation; without zoning
Ref. 40670205	Control Unit G-FENCE 600 Z - 11 alarm outputs - Inside / Outside installation; up to 10 zones of detection
Ref. 40670206	100m roll of detector Cable including 40 sensors - Green color (RAL 6500)
Ref. 40670204	Termination / Link Unit - UR/UT G-FENCE 600
Ref. 81100081	Outdoor Power Supply/Charger 110/230Vac 50/60Hz / 13.6Vdc - 2.2A - IP56 watertight plastic housing
Ref. 35145000	Battery 12V 1.2Ah for power supply 81100081
Ref. 93375007	Tie wraps - 26A1010 (bag of 1000) - 1 bag for 500m (1640 ft) of cable
Ref. 93408902	Reinforced detector cable - 328 ft. (100m) with 40 sensors
Ref. 82200148	Metallic tie wraps (bag of 100)
Ref. 24-92079-100	Stainless Steel heavy duty metal tie gun for G-Fence

#### Distributor Stamp



For the purpose of continuously improving the quality and performance of its products, Protech reserves the right to change the above specifications without notice.



Perimeter Intrusion Detection Systems

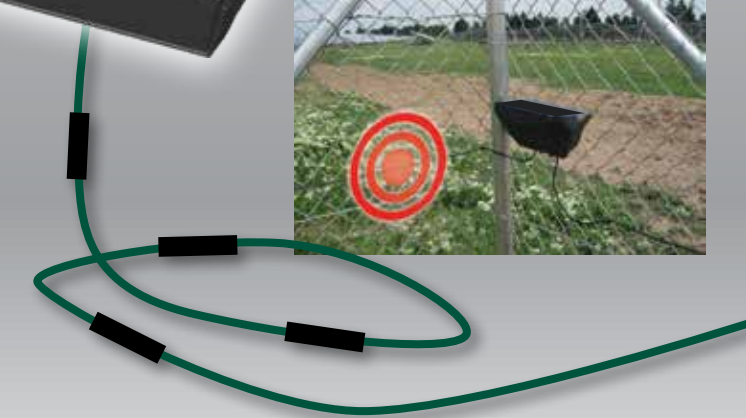
## G-FENCE 600 SERIES

### Fence-Mounted Intrusion Detection Systems



### Overview

- Detects **cutting, climbing or lifting of fence**
- **One (1) control unit per 1968 ft. (600m) of cable in two directions**
- **Easy installation and maintenance**



Protection Technologies, Inc.  
529 Vista Boulevard, A-3 • Sparks, Nevada 89434  
Telephone: (775) 856-7333 • Fax (775) 856-7658  
800-428-9662 • info@protechusa.com

protechusa.com

accelerometer  
technology



## Easy Installation

- Up to 1,968 ft. (600m) of perimeter protection
- Auto calibration of sensors
- Simple and quick installation with tie-wraps
- Passive cable, only the sensors detect
- Optional reinforced cable and sensors for harsh environments - concertina/barbed/razor wire, etc.
- Cable is resistant to bending and sustained pulling

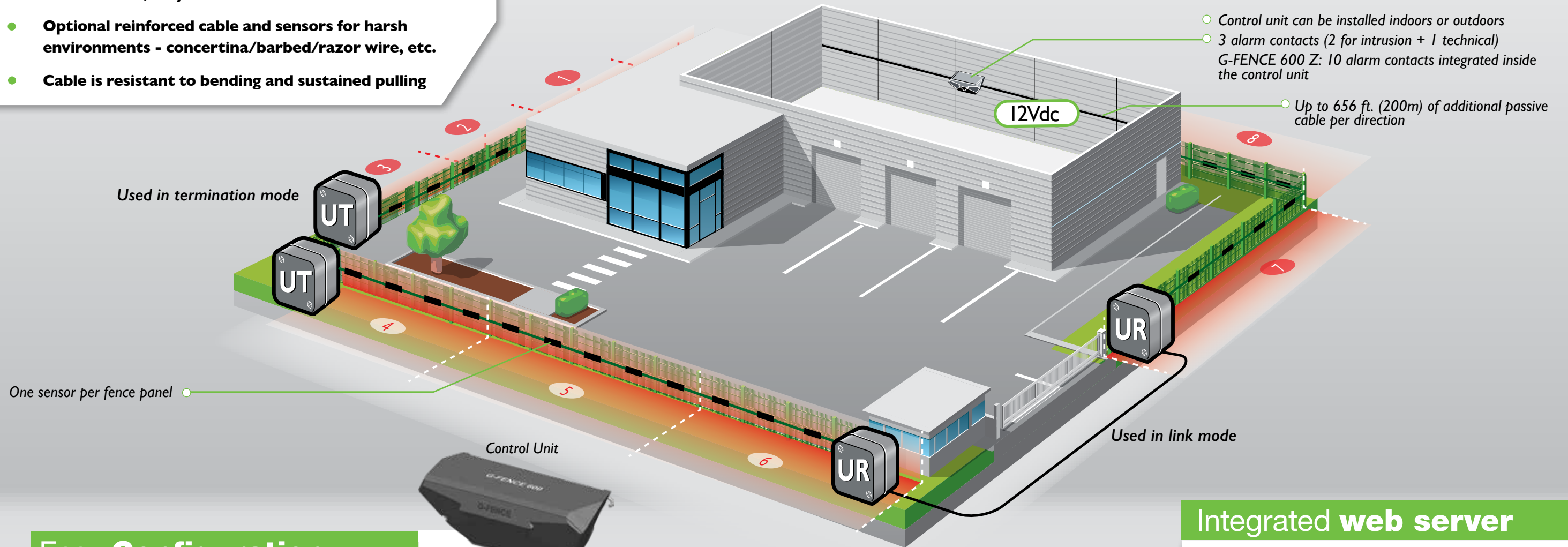


G-FENCE 600 Z Control Unit board

## Zoning Option: G-FENCE 600 Z

- Up to 10 detection zones
- Dry contact board integrated inside control unit
- Control of video systems

- Control unit can be installed indoors or outdoors
- 3 alarm contacts (2 for intrusion + 1 technical)  
G-FENCE 600 Z: 10 alarm contacts integrated inside the control unit
- Up to 656 ft. (200m) of additional passive cable per direction



## Easy Configuration

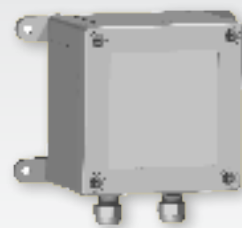
- Only 3 components:
  - Cable
  - Control unit (GFence 600 or 600Z)
  - Link / Termination Unit (UR/UT)



Cable



Control Unit



Link/Termination Unit (UR/UT)

## Integrated web server

- Remote maintenance
- Remote sensitivity adjustment
- Event log history (last 1000 events)
- Intrusion localization

