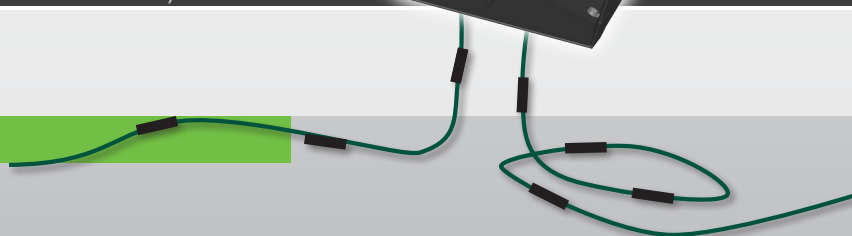




Perimeter Intrusion Detection Systems

## G-WALL

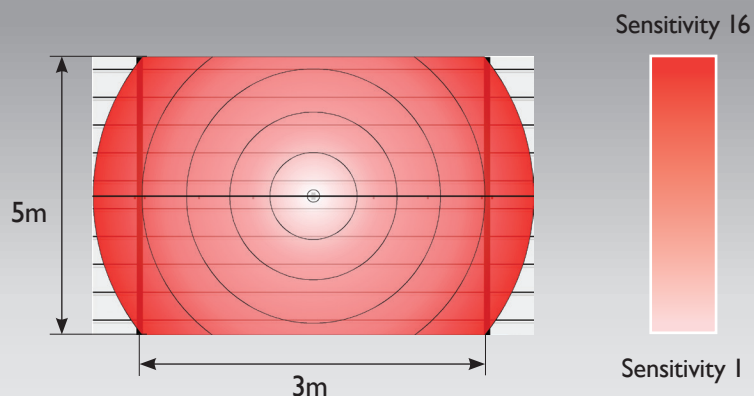
Wall-mounted Detection System



## Intrusion Detection Reliability

G-Wall is a wall-mounted intrusion detection system that detects intrusion attempts such as hammering, cutting and ramming on a wide range of surfaces including concrete, brick and metal-sheet cladding.

G-Wall is designed to protect and prevent entry into warehouses and commercial buildings by detecting intrusion attempts caused by significant impacts to the outside surface.



The detection zone rises with the sensitivity



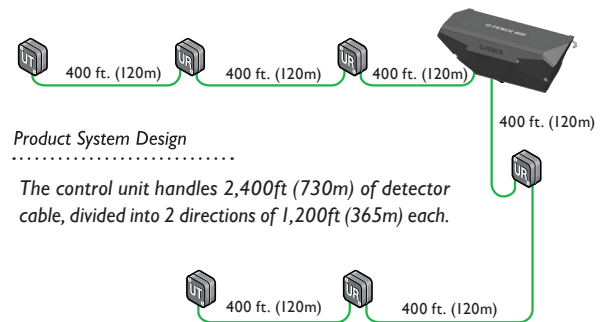
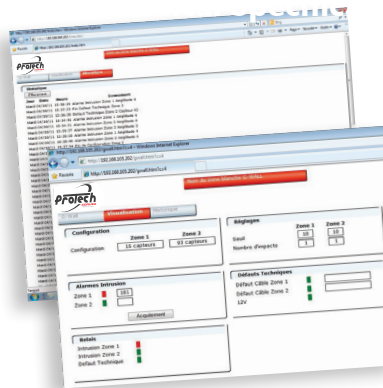
## Easy Installation and Modularity

G-Wall is composed of accelerometer-based technology sensors. 2,400ft. (730m) of detection cable and a control unit that can manage 10 zones of detection. Sensors are fixed directly to the wall with brackets every 10ft (3m).

Each sensor manages a detection range of 16.5ft (5m) high by 10ft (3m) wide with adjustable sensitivity settings (I-I6) per sensor to adapt to a range of surfaces. Calibration is automatic allowing for quick and easy installation.

## Remote Maintenance and Configuration

Maintenance and configuration of the G-Wall system's control unit is made easy through the web-based server. Operators/Installers can view and monitor alarm status (intrusion or technical) in real time. Details on the intrusion location and/or fault are accessible through the server. An integrated event log captures the last 1,000 events.



### Technical Specifications

<b>Power supply</b>	12Vdc
<b>Alarm information</b>	Intrusion (per cable) up to 10 zones Technical default (cable cut, power default) Tamper protection
<b>Operating temperature</b>	From -40°F to +158°F (-40°C to +70°C)
<b>Installation</b>	1 sensor every 10ft (3m) - up to 656 ft (200m) of additional passive cable per system from UG to initial URs and for non-detection areas
<b>Remote maintenance</b>	Integrated web server - Up to 1000 events log history

For the purpose of continuously improving the quality and performance of its products, Protech reserves the right to change the above specifications without notice.

### Part Number Description

40670206	120m (400ft) Roll of Detector Cable including 40 sensors that are spaced every 3m/10ft.
93407901	G-WALL Fixing Kit (packet of 40)
40670205	Control Unit G-Fence 600z with Zoning function up to 10 Detection Zones
40670204	Termination / Link Unit - UR/UT - G-FENCE 600



**Protection Technologies, Inc.**

529 Vista Boulevard, A-3 • Sparks, Nevada 89434

Telephone: (775) 856-7333 • Fax (775) 856-7658

800-428-9662 • [info@protechusa.com](mailto:info@protechusa.com)

[protechusa.com](http://protechusa.com)