



Perimeter Intrusion Detection Systems

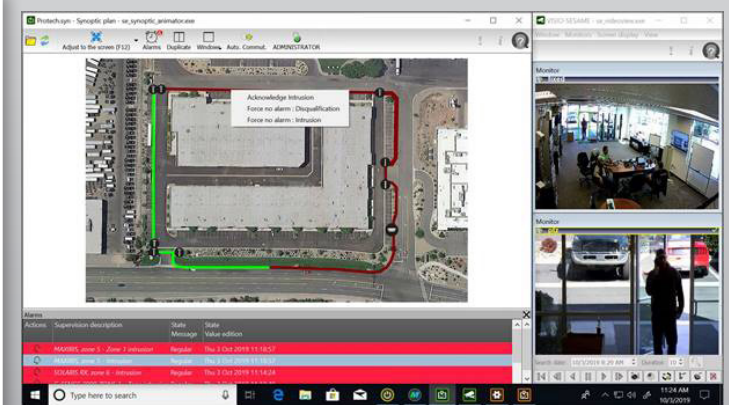
PROTECH MAPS

Monitoring Application for Perimeter Supervision

Configure and Manage alarms with customized software

PROTECH's **MAPS** graphic supervision and mapping software alerts security personnel and first responders of perimeter intrusions in order to respond more efficiently and effectively.

The mapping software is customizable to the user and site. Graphic views of entire sites are created for supervision and management and specific zones can be created.



Configuration, maintenance and supervision from a distance

Server-based configuration makes it easy for operators to create real-time representations of sites in one and/or several screen views. The overall site is designed with navigation menus or as a tree structure (for example, seeing a global view of the entire site with the ability to click and zoom in on a specific area).

Each screen is populated with of a set of graphic objects such as sections of the perimeter appearing in different colors upon intrusion, or when there are status changes in equipment. These objects and alarms are centralized on a supervision monitor and easily viewed for quick response.

Key Benefits

- The ability to visualize intrusion alarms through a graphic user interface makes operations easier and intervention responses faster and more efficient.
- Mapping can be used for alarm displays and maintenance assistance (example: low battery, communication breakdown, etc.)
- Through PROTECH **MAPS** software, automated video pre-sets (camera slew to intrusion) can be set up for confirmation and recording.
- Integrates easily with existing VMS platforms.

How It Works

Technical Specifications

Requirements	Windows 10 PRO; 64 BIT; 8G of RAM
Alarm Information	Active alarm flashes red-zone stays red until acknowledged
Acknowledge alarm	Right click on alarm zone
View alarm zone	Hover over alarmed zone
Cable cut	Shows Orange/Black
Trouble Alarms	Tamper, low battery; Associated icon flashes red
View alarm	Click on alarm icon or right click to display nature of alarm
Disqualification	Indicated on map surrounding zone
Disqualification & Alarm	Alarm will still be indicated if triggered during a disqualification alarm
Zoom	Ability to zoom in on map to display zones more clearly
Layout	Ability to arrange screen to show alarms on side or above/below map
Cameras/VMS Integration	AVIGILON, AXIS, BOSCH (BVMS), GENETEC (Security Center and Omnicast), MILESTONE (XPROTECT-Corporate/Expert/Professional), PELCO (VideoXpert), VICON (Valerus), VIDEOWAVE (OneTrack) and VIVOTEK

PROTECH MAPS software is developed and customized by PROTECH's sister company TIL Technologies of France.

NC219-US_ENV1.1 03.20



Seal of the retailer

In order to continuously ensure the high standard of quality and performance of our products, we reserve the right to modify the present technical data without notification.

Protection Technologies, Inc. - 529 Vista Blvd., A-3
 Sparks, NV 89434 - USA - Toll Free: 1-800-428-9662
 Phone: (775) 856-7333 - Fax: (775) 856-7658 - E-mail: sales@protechusa.com

www.protechusa.com