



INTEGRATION

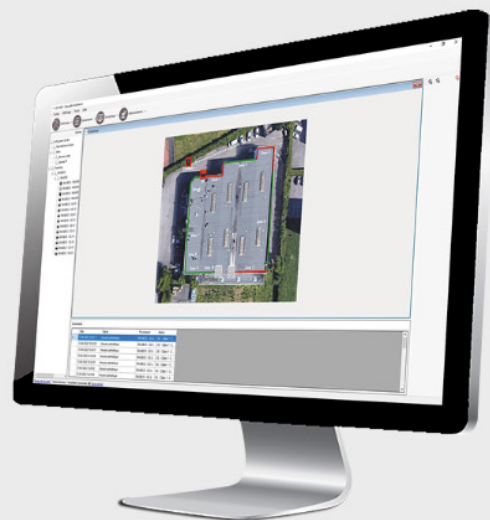


PRO-MAP

ALARM MAPPING SOFTWARE

PERFORMANCE FEATURES

- Simple and intuitive software
- Advanced features
- Simplified and effective map views
- Simplified Alarm verification



PRO-MAP

ALARM MAPPING SOFTWARE

INTEGRATION

SIMPLE AND INTUITIVE SOFTWARE

- **Streamlined site configuration:** automatic detection of equipment connected to PRO-MAP
- **Drag and drop function** allows for easy positioning of products on map view
- **Intuitive creation of detection zones on the siteplan**

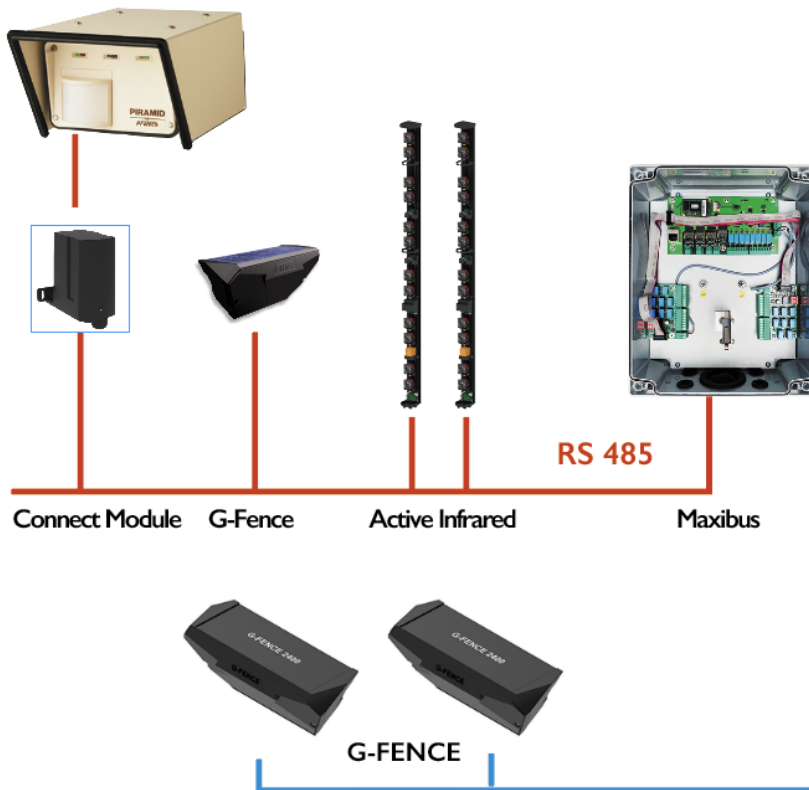
The screenshot displays the PRO-MAP software interface. On the left, a 'Site configuration' tree lists various equipment connected to the system, including COM1, COM2, and COM4. The main area shows a site plan with 10 detection zones (Zone 1 to Zone 10) outlined in green. A red box highlights a specific area on the map. At the bottom, an 'Events' table lists recent alarm events.

Date	Type	Source	Last name	Alarm
2023-03-29 2:35:45 PM	Parameter network default	MAXIBUS 1 - COM1 - ED - CONNECT	ENTRY_1	Input 1
2023-03-29 2:35:45 PM	Auxiliary Alarm	MAXIBUS 1 - COM2 - 1 - Zone1	AUX_TX	Auxiliary input
2023-03-29 2:35:45 PM	Parameter network default	MAXIBUS 1 - COM2 - 1 - Zone1	AP_TX	Turnover

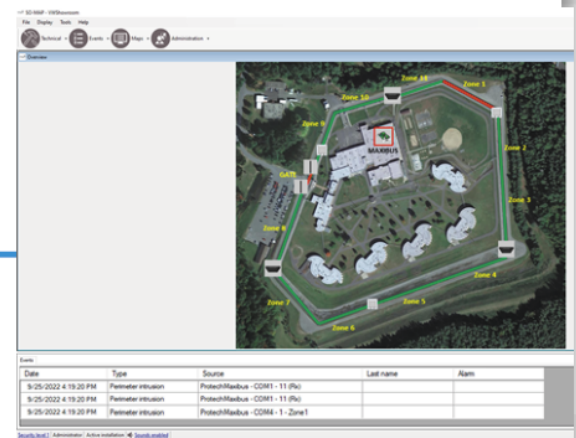
ADVANCED FEATURES

- **Multi-site management** with alarm prioritization
- **Addition of automated functions** (sending emails, sms, etc.)
- **Creation of an event log for recording events** (maintenance reports, etc.)

PIRAMID



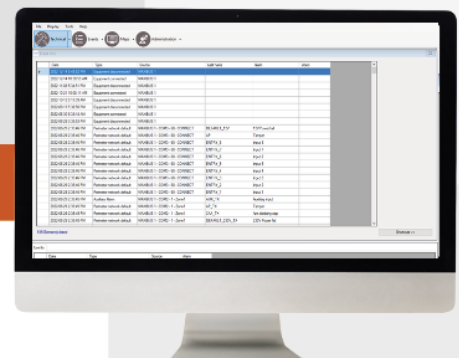
IP Network



PRO-MAP mapping software

SIMPLIFIED AND EFFECTIVE EXECUTION

- **Quick and accurate alarm reports** in realtime in "the feed"
- **Fully detailed list of site information and events** in the history log
- Filtering application for **optimization of event searches**



PRO-MAP

ALARM MAPPING SOFTWARE

INTEGRATION

NATIVE CONNECTION

MAXIRIS
SOLARIS
APIRIS
G-FENCE 2400
G-FENCE 3000

MI8 CONNECTION

MIRIS
BIRIS
MINIRIS
G-FENCE 600
PIRAMID
THIRD-PARTY
MULTI-SYSTEMS

8-INPUT MI8
MODULE

MAXIBUS
UNIVERSAL

CENTRALIZATION
OF ALARMS



ALARM MAPPING

PRO-MAP
MONITORING
SOFTWARE

CENTRALIZATION

CONFIGURATION

SECURE
TRANSMISSION

MAPPING

TECHNICAL CHARACTERISTICS

	PRO-MAP			
Operating system	Windows 10 PRO 64bits and higher. Memory: At least 8GB of RAM - Hard Drive: At least 40GB of disk space			
Available licenses	PRO-MAP software + license for 1 MAXIBUS	Expansion module for adding 5 MAXIBUS	PRO-MAP software + license for 5 G-FENCE 2400 Control Units	Expansion module for adding 5 G-FENCE 2400 Control Units
Integrated products via MAXIBUS Universal	All MAXIBUS Universal compatible products			
Products integrated directly in PRO-MAP	G-FENCE 2400			
Number max. of MAXIBUS Universal and/or G-FENCE 2400UG	30			

Part Number	Description
48752008	PRO-MAP. Graphic MAPS software 1 License provided for a MAXIBUS UNIVERSAL
48752004	PRO-MAPS. Extension module for SO-MAP graphical assistance software. Maximum 5 MAXIBUS UNIVERSAL
48752006	PRO-MAP - G-FENCE 2400. Graphic MAPS software. 5 licenses provided for G-FENCE 2400 Controllers
48752007	PRO-MAP - G-FENCE 2400 5 UG expansion module for graphical operating assistance software. <i>Prerequisite:</i> to operate a PRO-MAP G-FENCE 2400 software (48752006) must already be installed.



PROTECH MANUFACTURER OF PERIMETER INTRUSION DETECTION SYSTEMS FOR SENSITIVE SITES

Protection Technologies, Inc.
529 Vista Boulevard, A-3 • Sparks, Nevada 89434
Telephone: (775) 856-7333 • Fax (775) 856-7658
800-428-9662 • info@protechusa.com

protechusa.com