

INTEGRATION

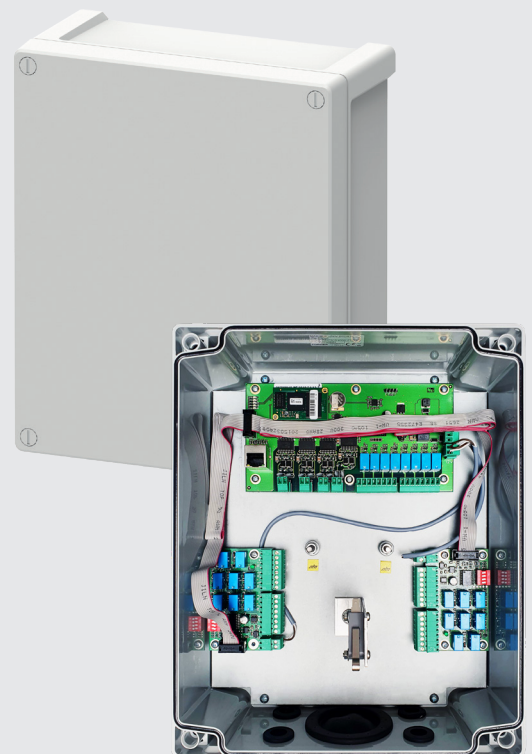


MAXIBUS UNIVERSAL

ALARM INFORMATION HUB

PERFORMANCE FEATURES

- **Centralization** of all alarm information to a single point, via networking: PROTECH products and third-party products
- **Remote configuration and maintenance** of detectors (infrared barriers, detection cable, etc.)
- **Secure data transmission**
- **Integration with VMS**



INTEGRATION

CENTRALIZATION

All PROTECH solutions are compatible with the MAXIBUS

- Centralization of all alarm information in a single point
- Four independent communication ports (each port is compatible with all PROTECH products)

NATIVE CONNECTION

- MAXIRIS
- SOLARIS
- APIRIS
- G-FENCE 2400
- G-FENCE 2400-IP65
- G-FENCE 3000

CONNECT MODULE

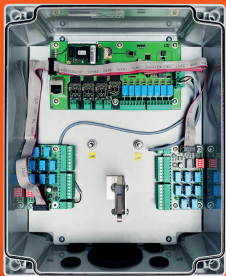
- PIRAMID XL2
- G-FENCE 600/600Z
- MIRIS 3100
- THIRD-PARTY MULTI-SYSTEMS

CONNECT
MODULE



MAXIBUS UNIVERSAL

CENTRALIZATION
OF ALARMS



ALARM
EXPLOITATION

SPECTRA

SUPERVISION SOFTWARE OF PROTECH'S PRODUCTS

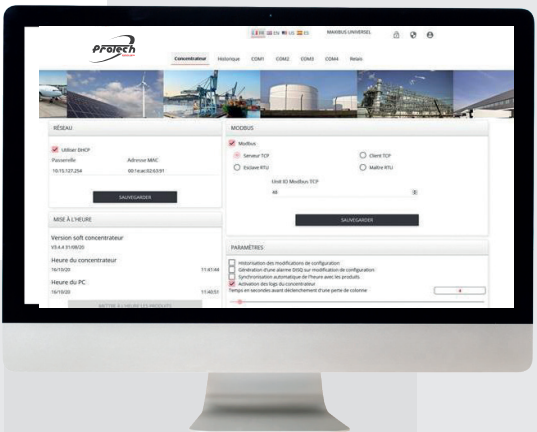
AND OTHER
SOFTWARE / VMS
INCLUDING

GENETEC, MILESTONE,
AVIGLON, EXACQVISION,
VELOCITY VISION

VMS INTEGRATION
SMART BRIDGE

CONFIGURATION

- Embedded web server
- Remote configuration and maintenance of detectors
- Real-time system status
- Time and history log with option to extract data
- Automatic configuration update:
 - DHCP compatible (automatic IP address recovery)
 - NTP compatible (automatic time update)



SECURE DATA TRANSMISSION

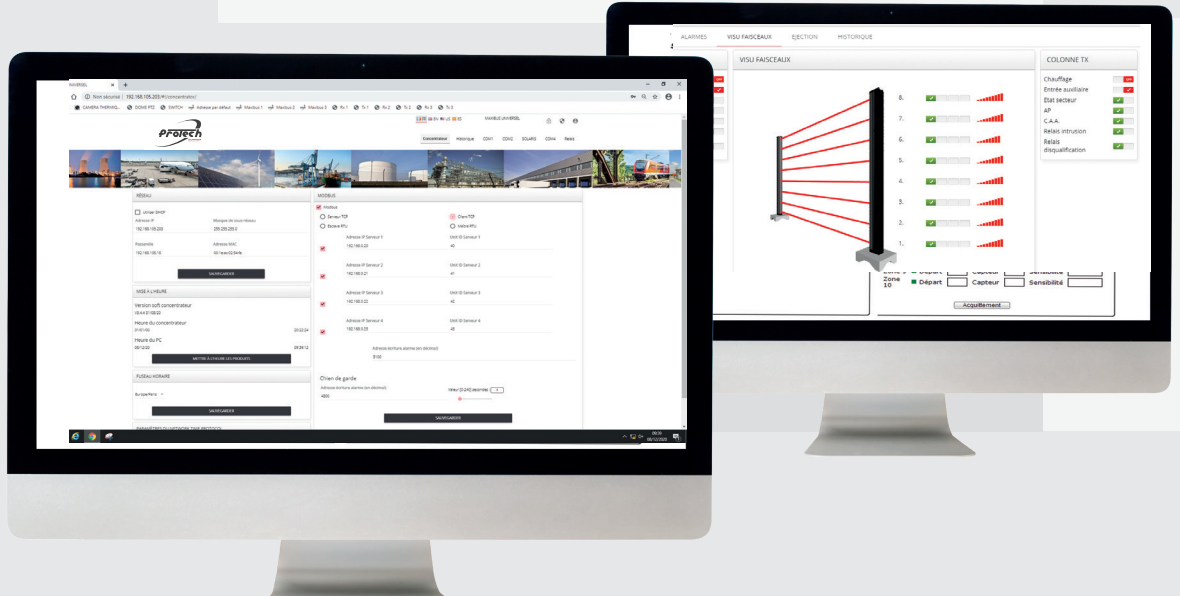
- Communication on secure networks protected against external attacks:
 - Communication possible with the 802.1x networks
 - Capacity to use authentication certificates
- Encrypted communication on IP network:
 - HTTPS configuration and operation possible
- Secure Modbus network communication
 - Modbus tunnelling by TLS

CENTRALIZATION

CONFIGURATION

SECURE
TRANSMISSION

OPERATION



OPERATION

- Integration with VMS-
 - MODBUS TCP / MODBUS RTU / API

TECHNICAL CHARACTERISTICS

	MAXIBUS UNIVERSAL
Power	12 V DC
Number of communication ports	2 or 4
Alarm outputs	8 to 136 dry contacts, Modbus TCP, Modbus RTU, API
Box dimensions (inches)	9.96" x 12.32" x 4.53"
Operating temperature	32° to 131°F
	OPTIONAL EXTRAS
Extension card	Up to 16 additional 8-relay extension cards
Connect Module	Wired or radio system that connects intrusion detectors to the MAXIBUS. Up to 8 inputs
SmartBridge	Software interface between the MAXIBUS and VMS
Electromagnetic compatibility	Compliant with European standards (CE label)