

SPECIFICS



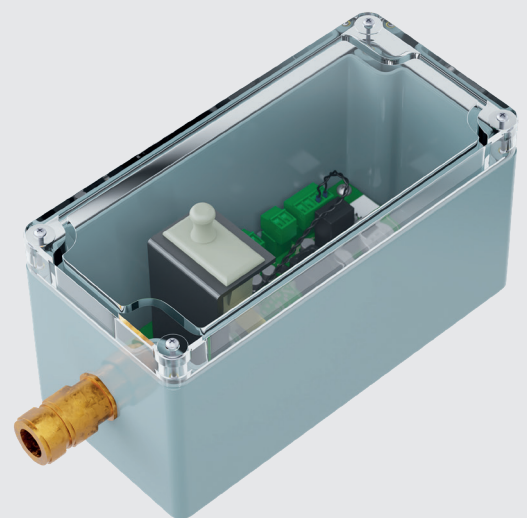
HATCH-SECURE

HATCH INTRUSION DETECTION SYSTEM



PERFORMANCE FEATURES

- **Unaffected by weather conditions** (rain, snow, extreme heat...)
- **Multi-sensors detect all types of sabotage** (cutting, drilling, forced opening, etc.)
- **Programmable sensitivity**
- **Simple to use:** connects via an output card to any existing standard alarm panel
- **Modular solution:** suitable for protecting a single hatch or up to 16 hatches per system



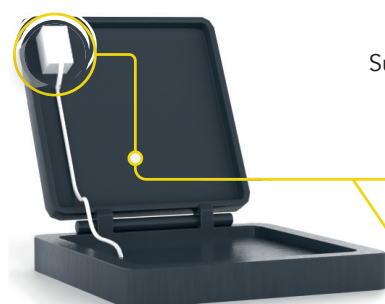
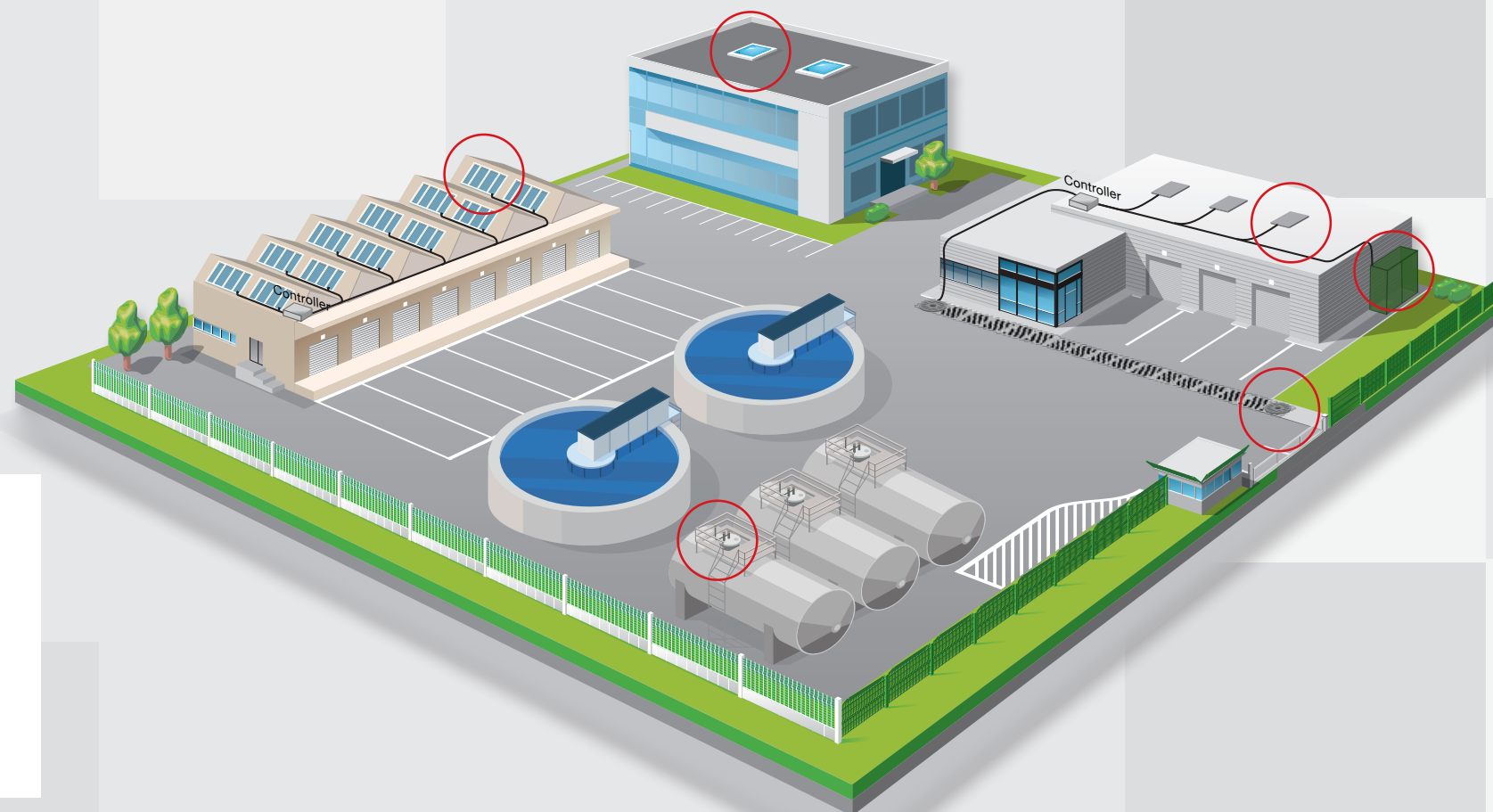
MULTI-SENSOR DETECTOR

MULTI-SENSOR DETECTION

- **Multi-sensors detect openings**, hammer impacts, torch cutting, drilling: gyroscope sensor and light sensor
- **Impact and Sustained Attack Detection**: MEMS accelerometers identify physical attacks like impacts and sustained attacks from tools.
- **Tilt Detection**: Accelerometers can also detect tilt if mounted on the hatch lid.
- **Torch Detection**: Ambient light sensors identify the use of cutting torches
- **Open/Close Detection**: General alarm inputs can be used with contact switches to detect hatch opening.
- **Additional Detection**: General alarm inputs also allow for other auxiliary inputs for detection methods like float sensors, tamper contacts, or magnetic sensors.

UNIVERSAL CONNECTIVITY

- **Quick and easy connection** to any standard alarm panel, via a dedicated output card
- **Centralization of alarms** for efficient incident management



Sustained
Attack

Fire
Torch

Impact

Tilt

Programmable
Sensitivity

Unaffected by
weather
conditions

MODULAR SOLUTION

- **Adaptable protection for one or more hatches**, with a dedicated controller managing up to 16 hatches
- **Custom programming** to activate or deactivate sensors according to user requirements (site operation)
- **Integration with security management systems (SMS)** for global supervision

SIMPLE TO USE

- Small, user-friendly and **easy to install**
- **Installation and maintenance accessible to any installer**, for optimum simplicity
- **Unaffected by weather conditions**: works perfectly in rain, snow or hot & humid environments
- **Programmable sensitivity** to adapt to different needs and environments



Ground hatches



Armored kiosks & doors



Cable trays (datacenter)



Bore holes



Sky Lights

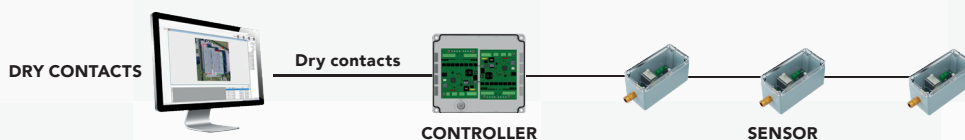


Steel grating and
duckboards

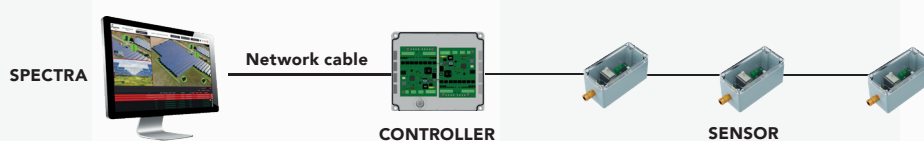
SPECIFICS

3 SIMULTANEOUS ALARM TRANSMISSION MODES

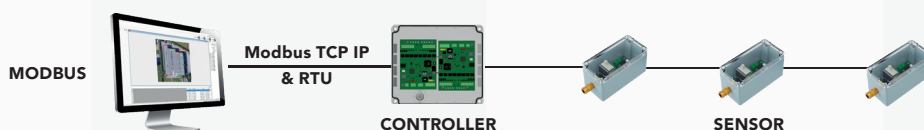
MODE 1 DRY CONTACTS



MODE 2 SPECTRA



MODE 3 MODBUS OUTPUT



TECHNICAL FEATURES

	HATCH-SECURE
Type of detection	Gyroscope sensor, brightness sensor
Auxiliary inputs	2 auxiliary inputs for additional sensors
Power supply	12 - 48V DC Sensor - 12V DC Controller
Alarm data	Impact - Drilling - Light - Tilt - Temperature
Alarm outputs	Modbus TCP relay
Operating temperature range	-40°F + 149°F (-40°C +65°C)
Weight	Controller 1.1 lb (0,5 kg) - Sensor 0.386 lb (0,175 kg)
Size	4.13"x 2.76"x 1.57"(105 mm x 70 x 40 mm)
Configuration tools	Software
Mounting	Mounting brackets not supplied