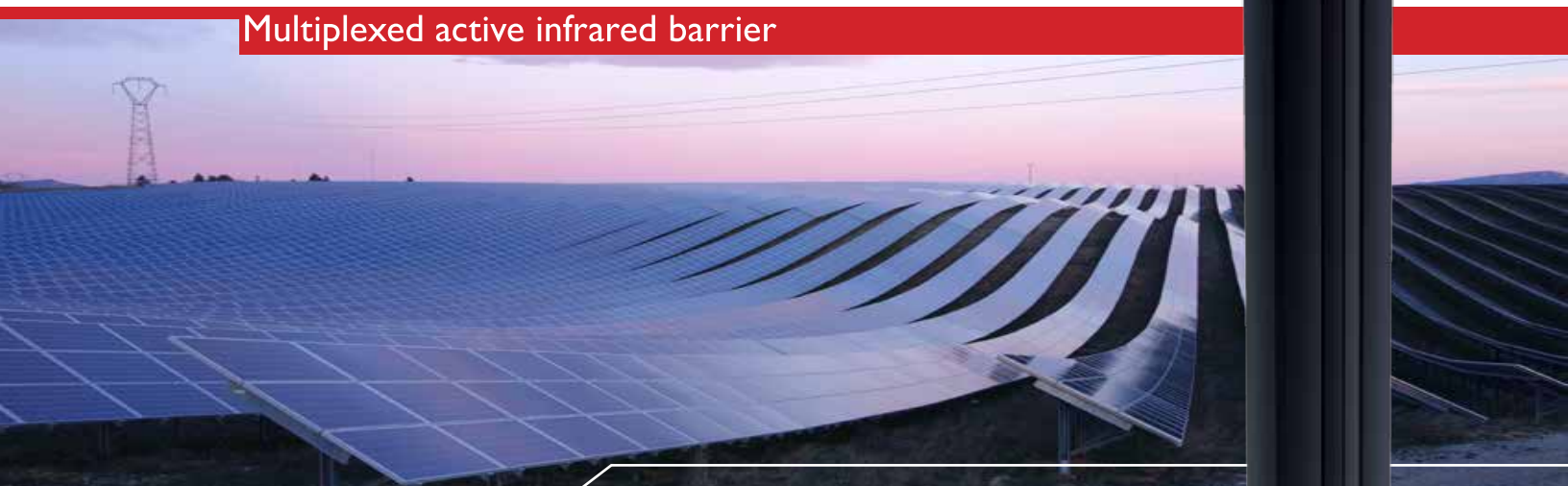


Perimeter Intrusion Detection Systems

MIRIS 3100

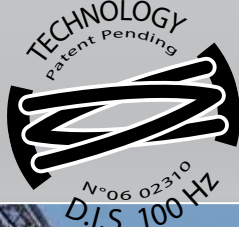
Multiplexed active infrared barrier



Optical
Sync



D.I.S.
Technology



High Performance

- **Identical** columns
- Integrated **alignment feedback** on every column
- **NEW High intensity IR beams**
Ability to extend your range to 656ft (200m)



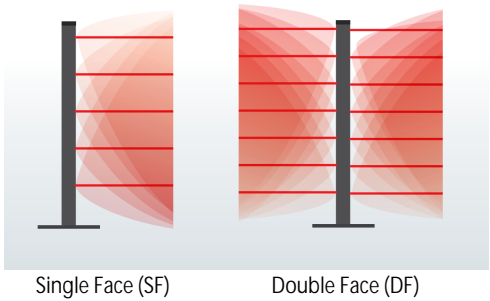
Miris 3100



Modular

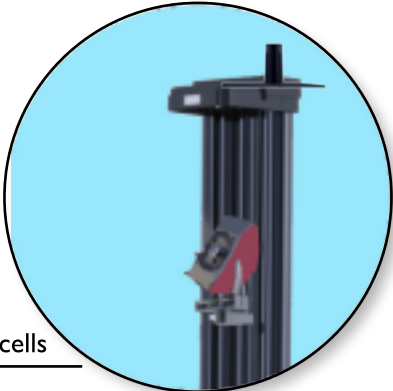
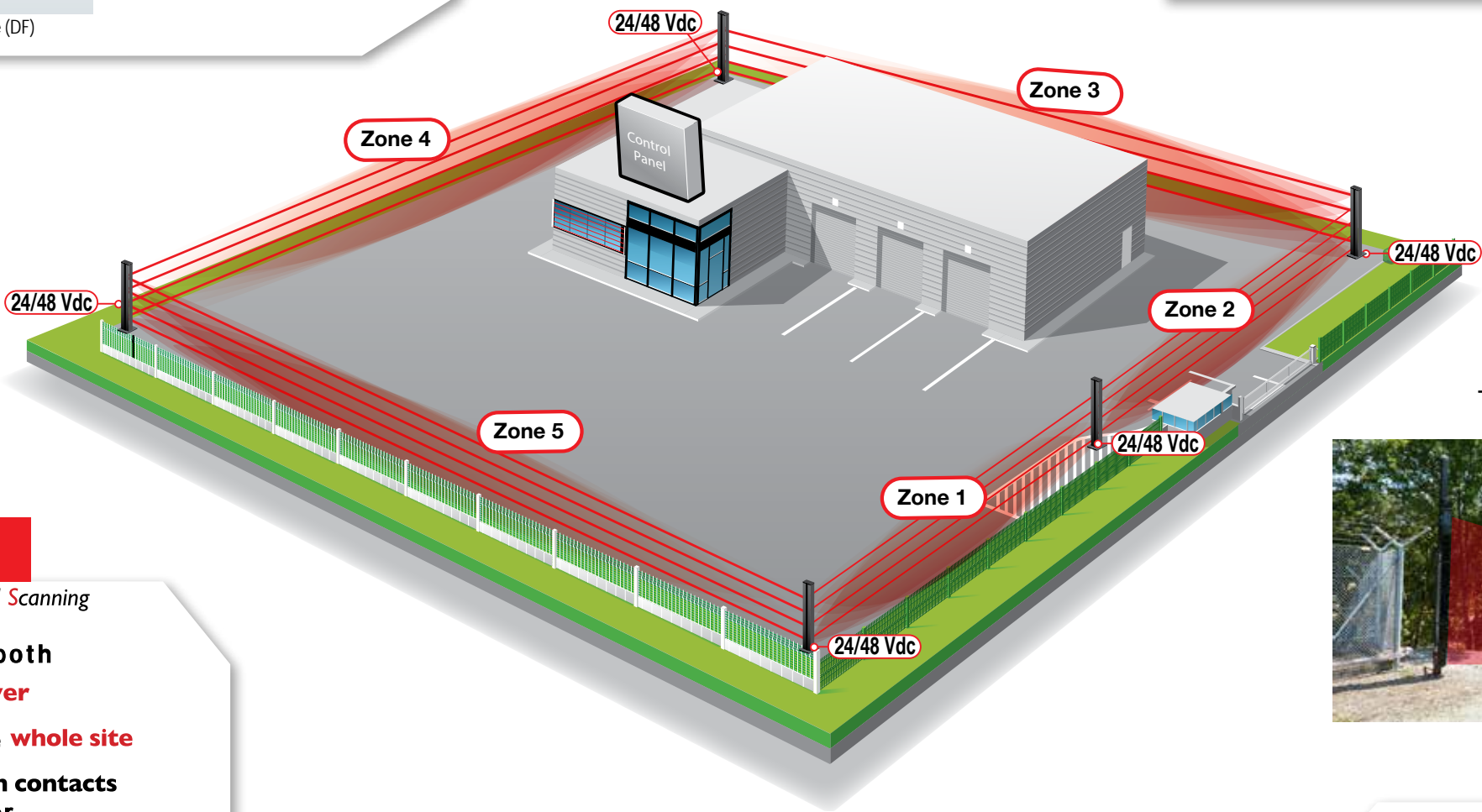
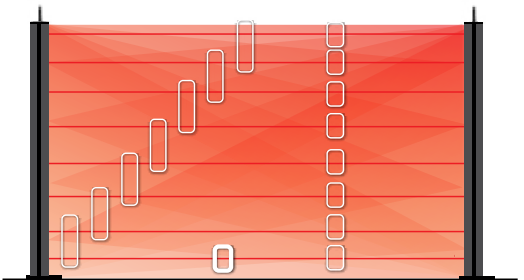
MIRIS 3100

- Single and double face tower
- Anti-climbing cap and sliding cable protection **integrated**



High Performance Infrared

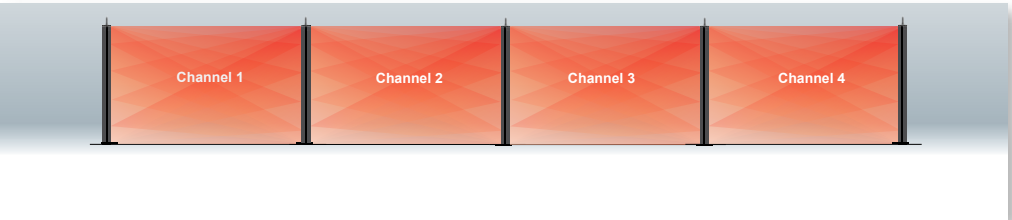
- Immaterial **wall of detection**
- Mixed cells : **Transmitter / Receiver**
- **Mono / Dual-beam** detection
- **Bottom beam** management : detect crawling
- **Alignment feedback** : 1 person can quickly align the beams



D.I.S Technology

Dual Interlaced Scanning

- **D.I.S** : every tower is both **Transmitter and Receiver**
- One tower type for the **whole site**
- **Simplified cabling** : alarm contacts available on every tower
- **1 Channel per barrier** (4 selectable channels)



Key Strengths

- **Modular**: Adapts to different levels of terrain
- **Flexible/modular** beam **heights** 6 ft. (2 m) and 10 ft. (3 m)
- **Integrates into existing environment**: Wall mounting if required
- Ability to add Protech's **Connect Module** for wireless alarm transmission

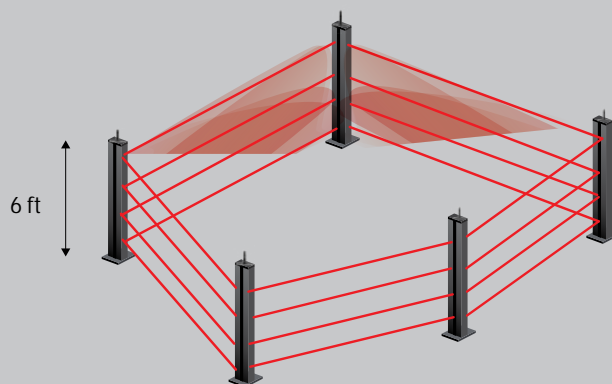
TECHNICAL CHARACTERISTICS

MIRIS 3100		
Outside maximum range	656 ft (200 m)	
Height of the tower	6 ft.	8 ft.
	2 m	3 m
Alarm outputs per tower	Intrusion - Disqualification - Tamper Anti-climbing cap	
Power input	24 Vdc to 48 Vdc	
Alignment tools	audio and visual signals inside each tower	
Operating temperatures	From -40 F° (-35°C) to 158°F (70°C)	
Number of cells per direction	4, 6 or 8 cells	
Cells management mode	Multiplexed and synchronized by optical link (4 channels)	
Heater	Thermostat heater anti-condensation and anti-dew	
Lens Cover	Made from polymethyl methacrylate, highest resistance to UV minimum 8-10 year lifespan	



Configuration Example

Example with 5 columns, 2m (6.6 ft), 4 cells, range 100 m (328 ft)



Required parts		MIRIS 3100	
Towers		5 x Tower 6 ft (2m) 4 beams DF Ref : 30742204C	
Brackets		5 x Floor sockets - Ref: 30580001-P	
Options			
Wall fixing SF		Ref: 30580002	
Wall fixing DF		Ref: 30580021	