

DUAL TECHNOLOGY DETECTORS



PIRAMID ATEX

MICROWAVE INTRUSION DETECTOR
IN EXPLOSION-PROOF HOUSING



PERFORMANCE FEATURES

- Volumetric detector in **explosion-proof housing**
- **Compliant with ATEX standards**
- **Reliable detection:** multiple product settings
- **Ultra-sensitive** site protection



COMPLIANT WITH ATEX STANDARDS

- **Protection in hazardous locations** with an explosion risk due to the presence of
 - flammable gases or vapors
 - combustible dusts or highly flammable fibers
- Compliant with **ATEX Directive 2014/34/UE** as well as General Directive on all low voltage products **2014/35/UE**
- Compliant with standards **IEC EN 60079-0, IEC EN 60079-1 & IEC EN 60079-31**

ATEX ZONES

The site security manager must determine the zones with an explosion risk due to the presence of gas, vapours or dust, in order to put in place secure devices suited to these very specific environments.
ATEX zones are classified according to their hazard level so that the most suitable ATEX detectors can be selected.

ZONE 0 (Gas) / ZONE 20 (Dust)

Permanent or long periods of a potentially explosive atmosphere during normal operation.

- **1000 hours / year**
- **Very high-level protection**

ZONE 1

Probable potentially explosive atmosphere

- **Exposure between 10 and 1 000 hours/year or more**
- **Enhanced protection level**

➤ **PIRAMID ATEX COMPATIBLE**

ZONE 2

Unlikely potentially explosive atmosphere surrounding...

- **Exposure less than 10 hours / year**
- **Typical protection level**

➤ **PIRAMID ATEX COMPATIBLE**

ZONE 21

Probable potentially explosive atmosphere

- **Exposure between 10 and 1 000 hours/year or more**
- **Enhanced protection level**

➤ **PIRAMID ATEX COMPATIBLE**

ZONE 22

Unlikely potentially explosive atmosphere surrounding...

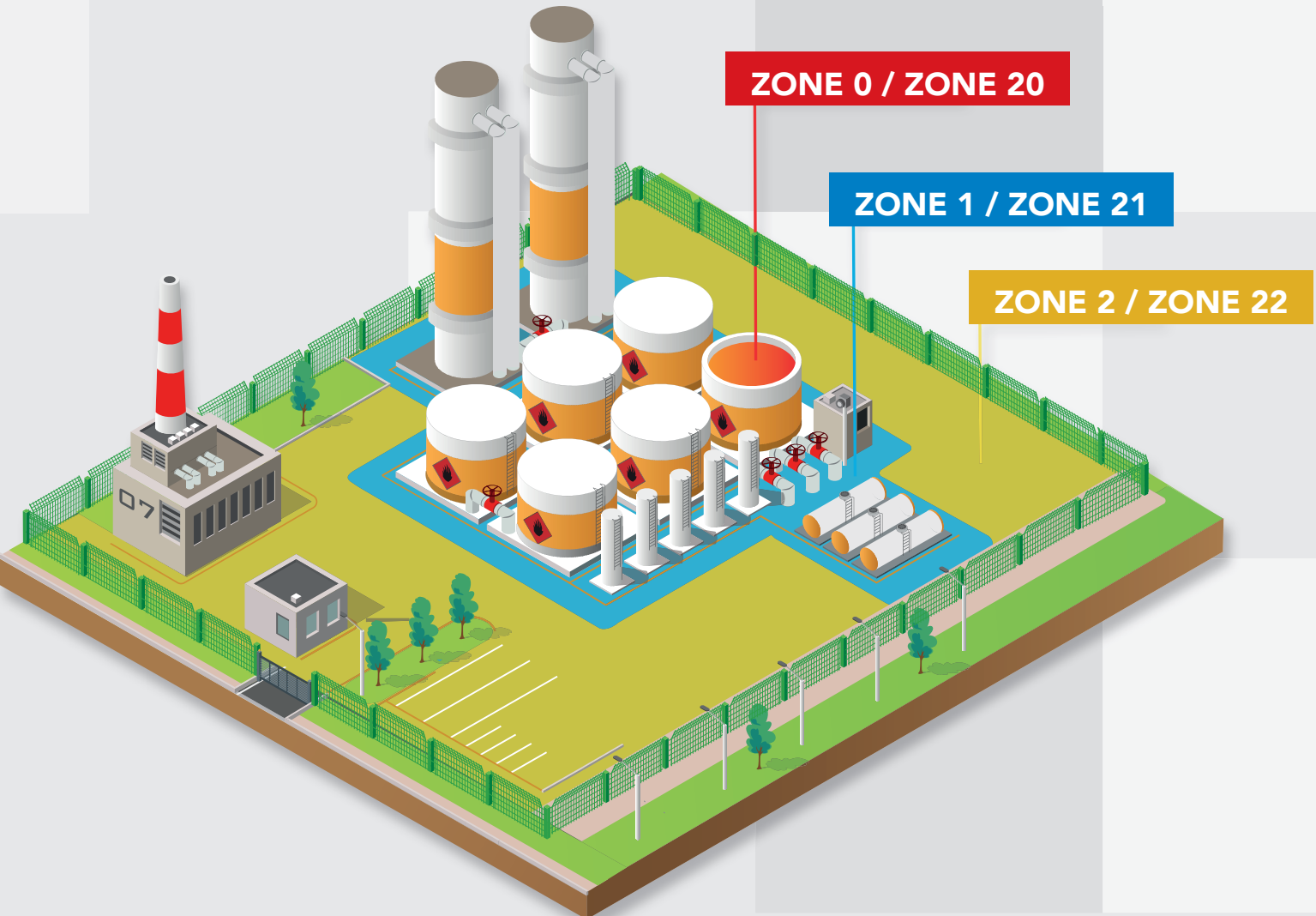
- **Exposure less than 10 hours/ year**
- **Typical protection level**

➤ **PIRAMID ATEX COMPATIBLE**

RELIABLE DETECTION

Volumetric detector with multiple settings:

- **Sensitivity setting:** minimum movement of target required to trigger an alarm
- **Range setting:** 3m to 30m (10ft to 100ft)
- **False alarm filtering:** filtering of vibrations or movements (e.g.: vegetation, small animals...)



ULTRA-SENSITIVE SITE PROTECTION

PIRAMID ATEX is suitable for sensitive sites classified as **Zones 1 and 2 for gas and Zones 21 to 22 for dust:**

- Oil rigs
- Petrochemical sites
- Industrial sites
- Hazardous material storage zones



TECHNICAL CHARACTERISTICS

	PIRAMIX ATEX
Input voltage	12 to 24 V DC
Consumption	100 mA at 12 VDC (LED OFF)
RF power density	Maximum 120 uW / cm ² in front of device
Weight	12 kg (26.5 lb)
Operating temperature	-40 °C to +65 °C (-40°F to +150°F)
Protection index	IP66 in accordance with EN 60529 and IEC 60529 Mechanical strength IK10 in accordance with EN 50102
Relay contact capacity	100 mA / 50 V
Microwave	Factory set to one of the following frequencies 10,587 MHz USA 10,587 MHz International 9,900 MHz International 9,470 MHz International
Electrical cabling	International housing provided with NPT ½" thread and cable gland for unarmoured cables Diameter 5.5 mm to 8 mm Diameter 8 mm to 10.5 mm Diameter 10.5 mm to 13 mm