

ACTIVE INFRARED BARRIER



MAXIRIS

VERY HIGH-PERFORMANCE
ACTIVE INFRARED BARRIER



PERFORMANCE FEATURES

- **High reliability** of infrared
- **High density of cells**
- **Remote configuration and maintenance diagnostics**
- **ZONING** function
- **High detection performance**
- **MAXIBUS Universal compatible:** integration with VMS

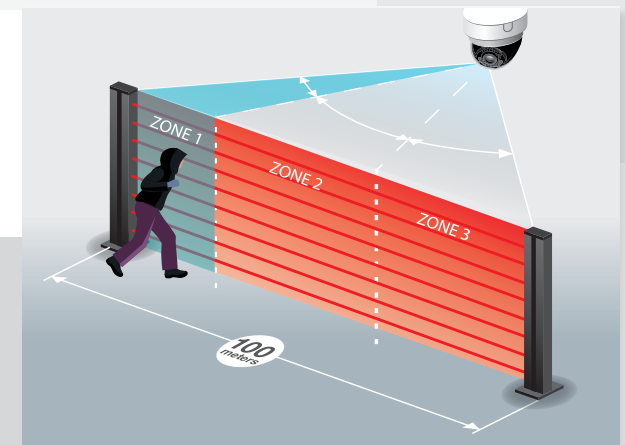


HIGHLY RELIABLE INFRARED

- **33 years' experience** in infrared technology
- **Intruder size filtering using several simultaneous detection modes:**
 - standard modes: mono-detection, bottom beam mono-detection and dual-detection
 - **triple-detection:** alarm on interruption of 3 cells limiting false alarms (in particular animals)
- **Intruder speed** filtering: **alarm timing**
- Combination of the two filters: **reduction in number of unwanted alarms**
- **Multiple heights** and high cell density:
 - Up to 10 cells for 6 ft. (2 m) high columns
 - Up to 14 cells for 10 ft. (3 m) high columns

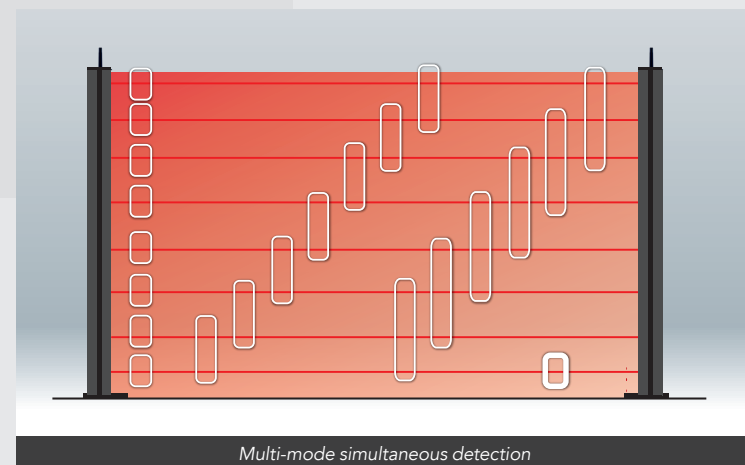
ZONING FUNCTION

- Optimization of the video system and **alarm verification**
- Up to **3 detection zones** per barrier
- **Configurable zone** lengths



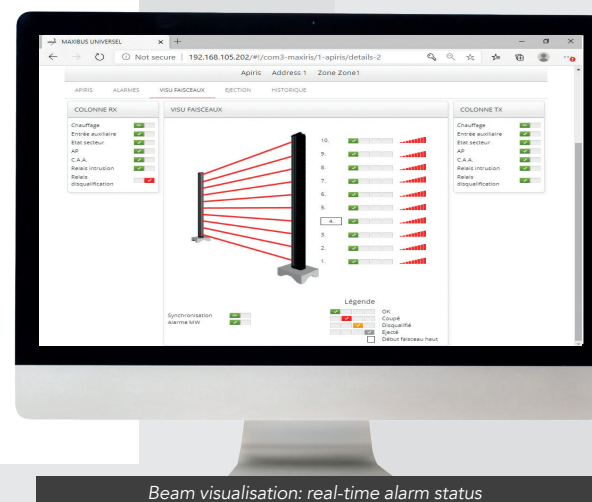
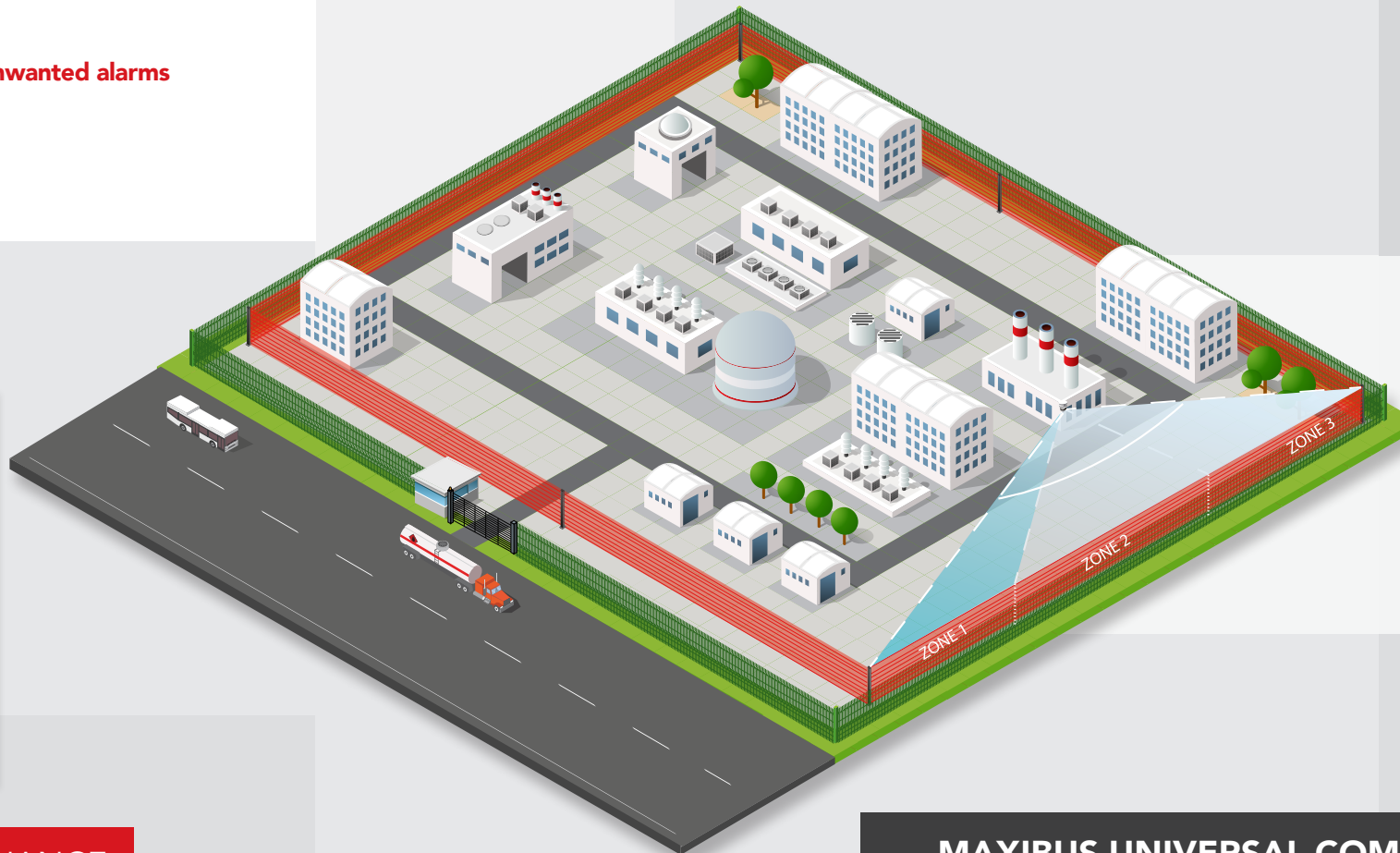
ADAPTABILITY

- Can be adapted to **all site configurations:**
- **High density of beams:** max 14 beams per 10 ft tower in single direction
- **Zoning:** from 6 to 10 cells per 8 ft. / 10 ft. (2.5 m / 3m) tower (top beam left uncut)
- **Lightning surge protection:** Integrated and easily replaceable



REMOTE CONFIGURATION AND MAINTENANCE

- **Embedded web server**
- **Beam visualization:** real-time alarm status
- Configuration of **number of cells**
- Possibility to **eject one or more beams**
- Configuration of **each detection mode** and **its response time:**
 - mono-detection
 - independent bottom beam management (crawling)
 - dual-detection
 - **triple-detection**
- Possibility to configure **several detection modes simultaneously**



MAXIBUS UNIVERSAL COMPATIBLE

OPTIMISED ALARM MANAGEMENT...

- **Centralization of all system alarms** to a single point
- **Remote access to products:** configuration and maintenance
- **Embedded** web server
- **Time and date stamped history** of alarm events

...DESIGNED FOR SIMPLIFIED INTEGRATION ON ALL YOUR SITES

- **Integration with VMS**
- **Easy integration:** API available
- **Secure** data transmission: **802.1X**, TLS...
- **Various** alarm transmission **protocols:** ModBus, API
- **Dry contact** outputs: up to 136 relays

TECHNICAL CHARACTERISTICS

	MAXIRIS COLUMNS				
Tower heights	3 ft. 1 m	5 ft. 1.5 m	6 ft. 2 m	8 ft. 2.5 m	10 ft. 3 m
Maximum outdoor IR range in all weather conditions	328 ft. (100 m)				
Indoor maximum range	1640 ft. (500 m)				
Detection modes	Multiplexing with wired synchronization: mono-detection / bottom beam mono-detection / dual-detection / tri-detection				
Power supply	24 VDC to 48 VDC				
Alarm information	Intrusion (up to 3 pieces of alarm information with zoning: 1 per zone) / Disqualification / Tamper / Anti-climbing cap / Technical alarm				
Alarm transmission	Wired network output / dry contact				
Alignment tools	Audio and visual signals on all columns				
Operating temperature	-40 °F to +158 °F (-40 °C to +70 °C) Thermostatic heater in each tower				
Electromagnetic compatibility	Compliant with European standards (CE label)				

	MAXIBUS UNIVERSAL HUB
Configuration tools	Embedded web server
Alarm outputs	8 to 136 dry contact outputs / Modbus / API
4 communication ports	32 columns per communication port
Power supply	12 Vdc
Operating temperature	0 °C to +55 °C
Security	Compatible networks 802.1x and TLS