

INTRUSION DETECTION SYSTEM



G-FENCE 2400-IP65

FENCE-MOUNTED INTRUSION DETECTION
ACCELEROMETER-BASED TECHNOLOGY



KEY FEATURES

- Simplified installation with removable terminal strip
- Remote configuration, maintenance and software updates
- 3 Simultaneous multimode alarm transmission options
- MAXIBUS compatibility
- Integration with all leading VMS platforms
- IP65/NEMA 4X Rated Enclosure



G-FENCE 2400-IP65



ACCELEROMETER-BASED TECHNOLOGY

SYSTEM DESCRIPTION

- **Accelerometer-based technology** - provides distributed intelligence
- **Control Unit protects 1968 ft. (600m)** - 8 ft. fence panels
- **Control Unit protects 2400 ft. (720m)** - 10 ft. fence panels
- **Compatible with MAXIBUS** - up to 16 Control Units can be used with each MAXIBUS
- **Works on most types of fences** - chainlink, steel, wrought iron, anti-climb, mesh
- **Highly immune to inclement weather** - heavy rain, strong winds, icy conditions
- **High probability of detection (PD)** - low nuisance-alarm-rate/false-alarm-rate (NAR/FAR)

SIMPLIFIED INSTALLATION AND MAINTENANCE

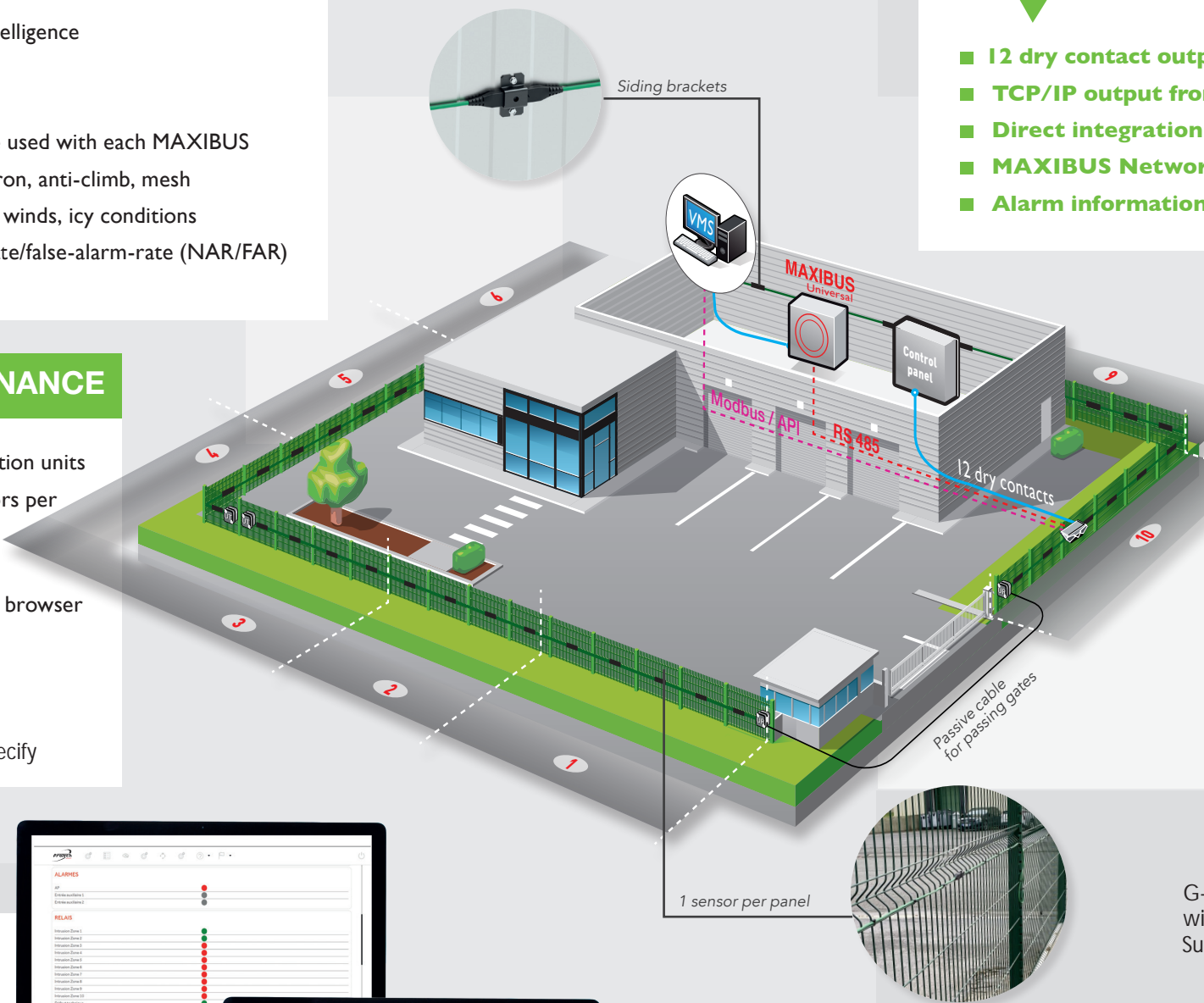
- **Quick and easy installation** - cable, control unit, link/termination units
- **Durable cable resistant to bending and pulling** - 40 sensors per cable roll
- **Copper wire** - easy to splice and repair
- **Addressable sensors** - user friendly configuration through web browser of sensor sensitivity and number of impacts
- **Removable terminal strips**
- **Localization of intrusion and cable-cut to 10 ft. (3m)**
- **Pre-installed Surge Protectors** use -LSP1 or -LSP2 suffix to specify

MULTIPLE SETTINGS AND ZONING

- **No software required:** embedded web server
- **Simple and intuitive** web interface
- **Broad range** of cable sensitivity settings
- **Multiple system adjustments:**
 - Number of impacts - by zone
 - Sensitivity settings - by sensor
- Possibility to configure **one zone per sensor** and up to **10 detection zones** per control unit

OPTIONAL REINFORCED CABLE

- **Cable protected in outer jacket** for installations on concertina / barbed wire



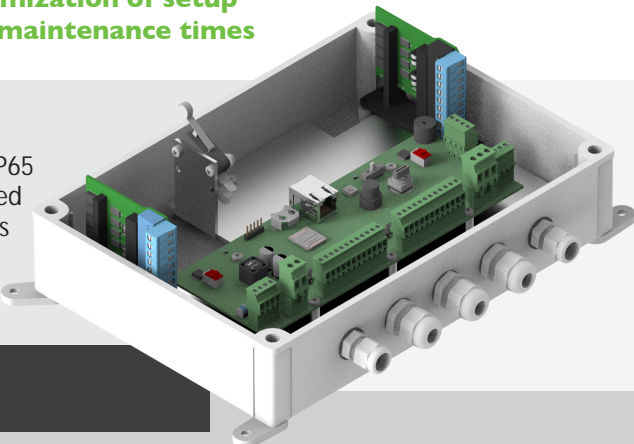
MULTIMODE ALARM TRANSMISSION

- **12 dry contact outputs** - (10 alarm, 1 tamper, and 1 technical defect)
- **TCP/IP output from the Control Unit**
- **Direct integration with VMS via API or SmartBridge**
- **MAXIBUS Network compatible (Modbus RS485)**
- **Alarm information transmission** - occurs simultaneously in all modes

REMOTE MANAGEMENT

- **Remote configuration** via MAXIBUS or via Control Unit on IP network
- **Remote maintenance:**
 - **Time and history log:** localization of triggered sensor
 - **Real-time visualization** of system status, intrusion localization...
- **Control Unit updating :**
 - locally via SD card
 - remotely via Control Unit web interface or MAXIBUS
- **Optimization of setup and maintenance times**

G-Fence 2400-IP65 with Pre-installed Surge Protectors



MAXIBUS COMPATIBLE

ALARM MANAGEMENT...

- **Centralization of all system alarms** to a single point
- **Remote access to products:** configuration and maintenance
- **Embedded** web server
- **Time and history log** of alarm events

...DESIGNED FOR SIMPLIFIED INTEGRATION ON ALL SITES

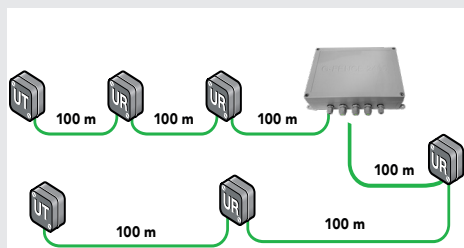
- **Integration with all leading VMS platforms**
- **Easy integration:** API available
- **Secure** data transmission: **802.Ix**, TLS, etc.
- **Various** alarm transmission **protocols:** ModBus, API
- **Dry contact** outputs
- **Surge Protectors** pre-installed options available

G-FENCE 2400-IP65

FENCE-MOUNTED INTRUSION DETECTION SYSTEM
MULTIMODE ALARM TRANSMISSION

INTRUSION DETECTION SYSTEM

SYSTEM ARCHITECTURE



SYSTEM

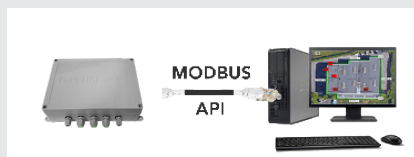
93421901	Control Unit G-FENCE 2400-IP65 - Relay Outputs, Maxibus Integration & API Integration
93421901-LSP1	Control Unit G-FENCE 2400-IP65 - Relay Outputs, Maxibus Integration & API Integration w/Lightning Surge Protector integrated on Channel A
93421901-LSP2	Control Unit G-FENCE 2400-IP65 - Relay Outputs, Maxibus Integration & API Integration w/Lightning Surge Protector integrated on Channel A&B
40670206	Roll of 400ft. (120 m) G-FENCE 2400 detection cable, including 40 sensors
40670204	UR/UT G-FENCE 2400
82800187	Magnetic G-Fence Gate Connector
82201148	Coated Metal Stainless Steel Metal Tie Wraps (Bag of 100)

3 SIMULTANEOUS ALARM TRANSMISSION MODES

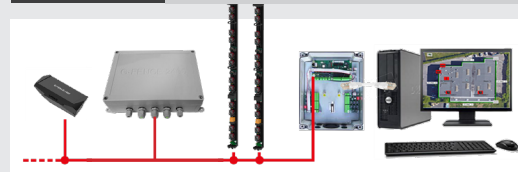
MODE 1 Dry contact



MODE 2 API over IP



MODE 3 RS485 to MAXIBUS



TECHNICAL SPECIFICATIONS

Power supply	12 to 24Vdc		
Alarm information (12 alarm outputs)	Control Unit (UG)	Detection zones	System
	Tamper	Intrusion (10 ZONES)	Perimeter defect (cut cable)
Alarm transmission (3 modes)	Dry contacts - API over IP - RS485 to MAXIBUS		
Protection length per roll (40 sensors)	328 ft. (100m) 8 ft. fence panels - 400 ft. (120m) 10 ft. fence panels		
Maximum protection per Control Unit	1968 ft. (600m) 8 ft. fence panels - 2400 ft. (720m) 10 ft. fence panels		
Operating temperature	From -40°F to +158°F (-40°C up to +70°C)		
Enclosure ratings, IP / NEMA	IP65 rating; NEMA Class: 1, 4, & 4x		
Eletromagnetic compatibility	Compliant with European standards (label CE)		
Installation recommendations	One sensor per panel - up to total of 656 ft. (200m) of passive cable (per direction of detection cable)		
Configuration	Sensitivity setting per sensor or per direction and number of impacts per zone		
Remote maintenance	Embedded web server		
	MAXIBUS HUB		
Configuration tools	Embedded web server		
Alarm transmission (3 modes)	Dry contacts - API over IP - RS485 to MAXIBUS		
4 communication ports	4 Control Units per communication port		
Power supply	12 Vdc		
Operating temperature	-40°F to +158°F (-40°C to +70°C)		
	Compatible networks 802.IX & HTTPS.		

MANUFACTURER OF PERIMETER INTRUSION DETECTION SYSTEMS FOR SENSITIVE SITES

In order to continuously ensure the high standard of quality and performance of our products, we reserve the right to modify the present technical data without notification.



Protection Technologies, Inc. - 529 Vista Blvd - Sparks, NV 89434 - USA www.protechusa.com

Toll Free: 1-800-428-9662 (775) 856-7333 | (775) 856 7658 | sales@protechusa.com